

## **COST Action ES1206 - GNSS4SWEC**

Advanced GNSS Tropospheric Products for  
monitoring Severe Weather Events and Climate

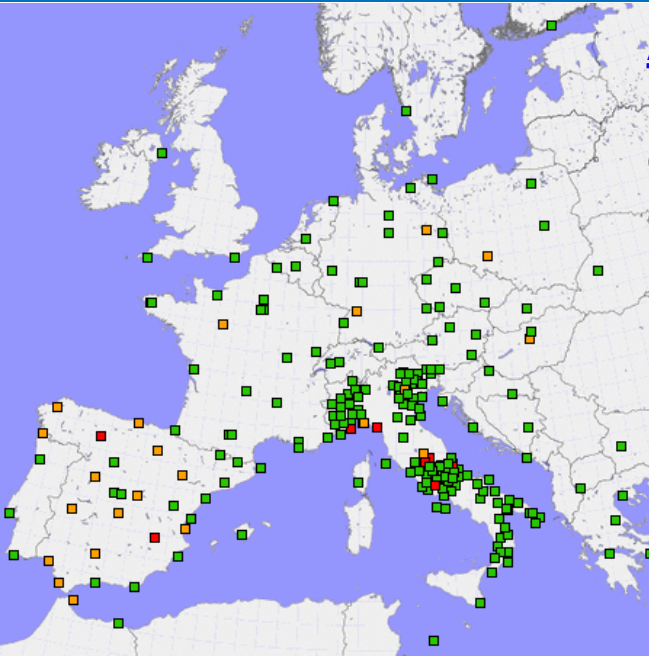
# Management Committee Meeting

## National Report: Italy

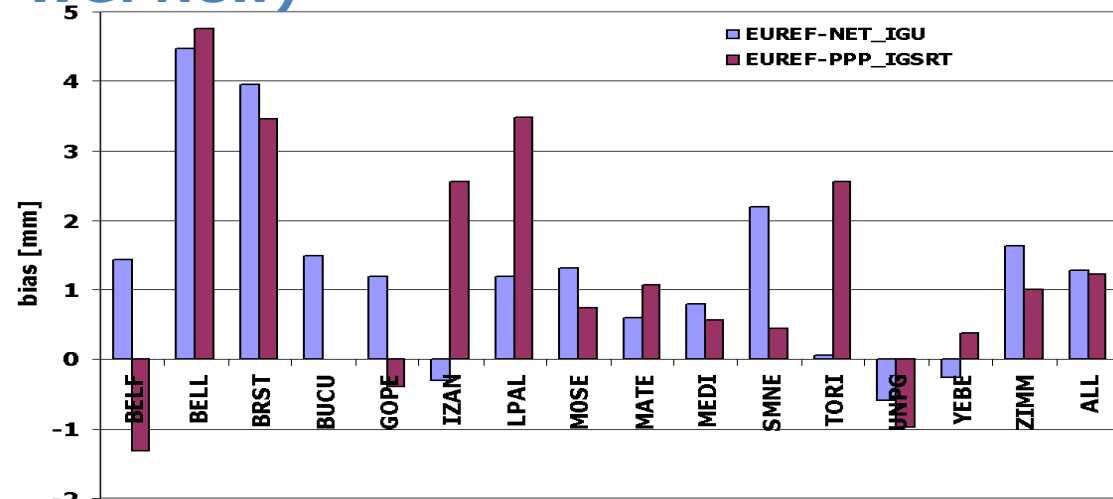
ASI/CGS, Matera

Fondazione Ugo Bordoni, Roma

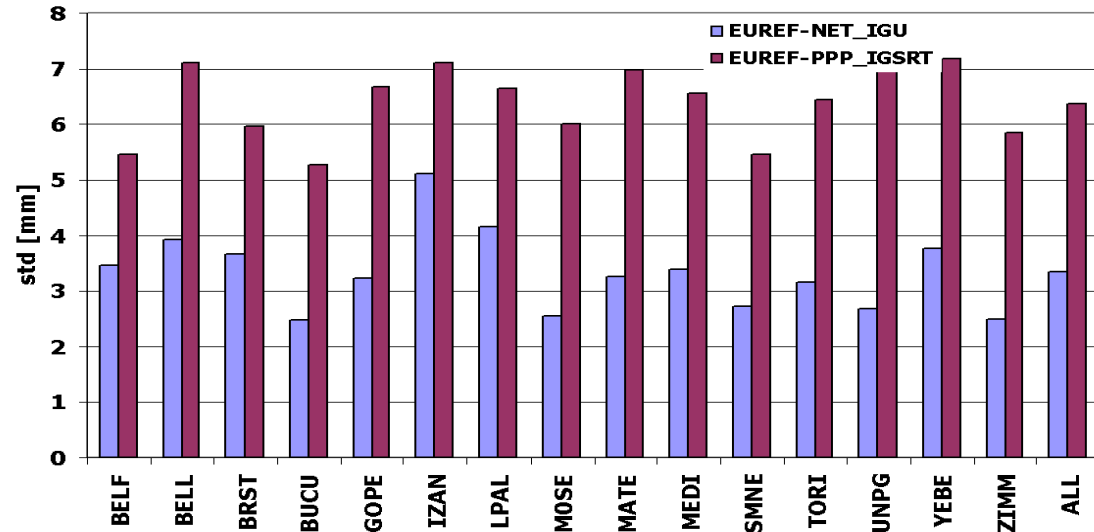
ICTP, Trieste



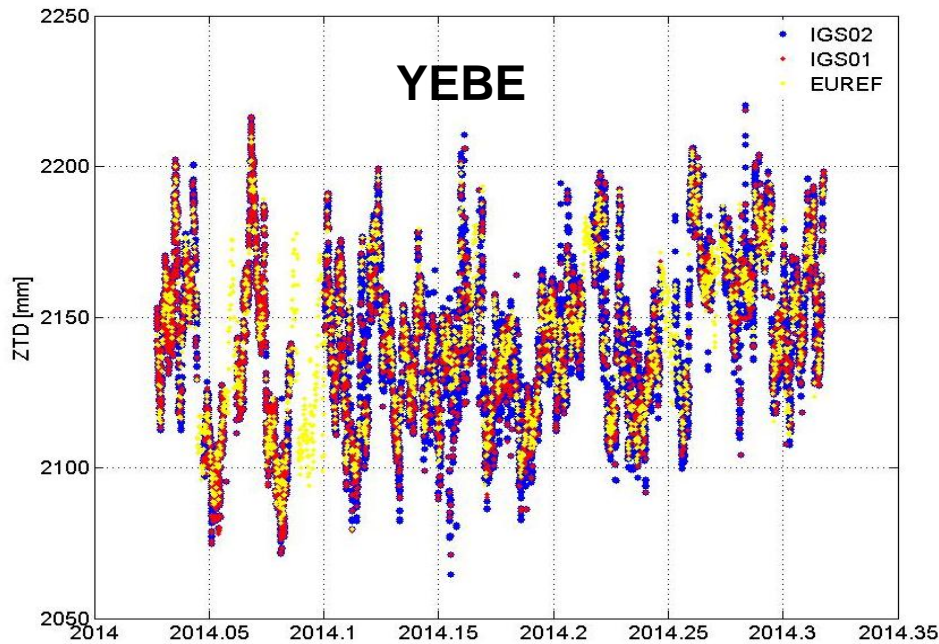
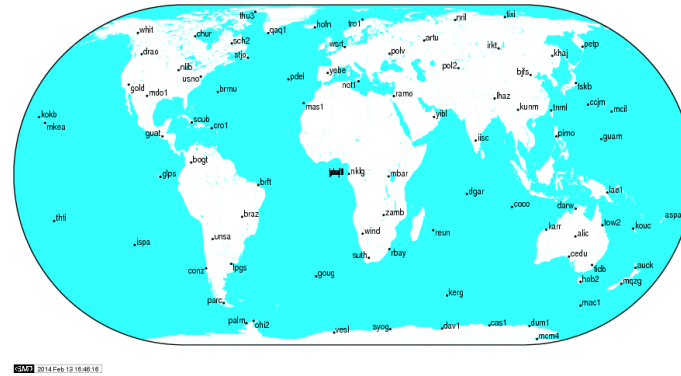
**ASI/CGS E-GVAP Network**: the goal is to **add as many GNSS stations as possible** to the existing network to homogenize the coverage of troposphere products over Italy  
**(Sub-WG: New)**



**Assessment of IGS RTS in Near Real-Time solutions**  
**(Sub-WG PPP)**

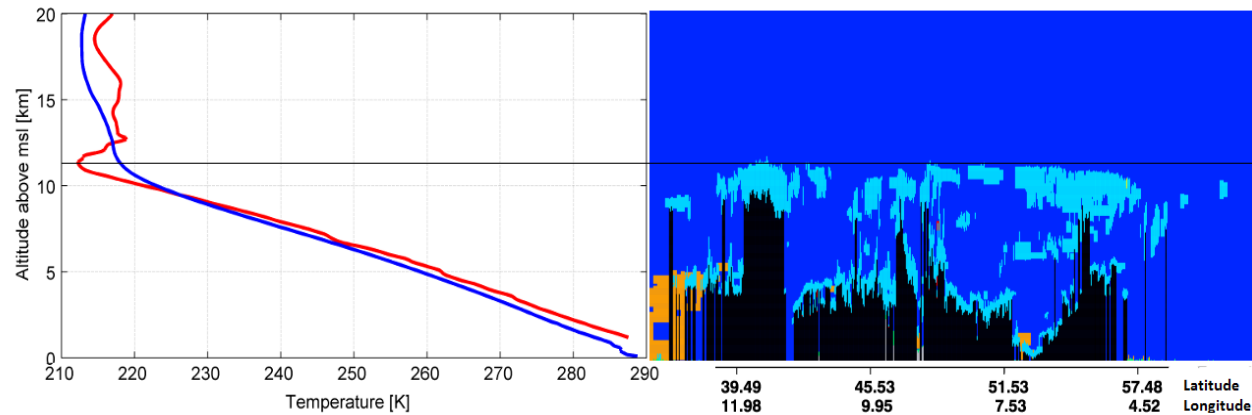
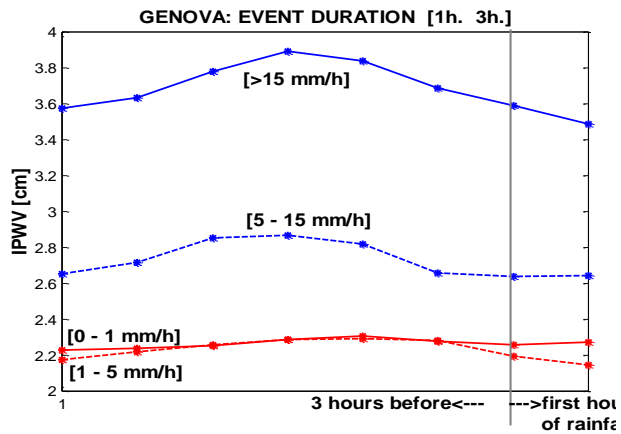


## EPN+IGS core network reprocessing 1996-2013 (Sub-WG Repro and WG3)

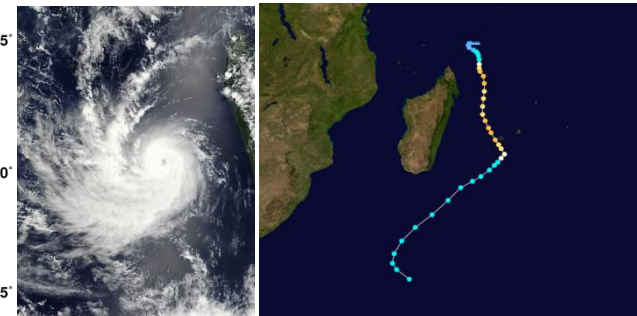
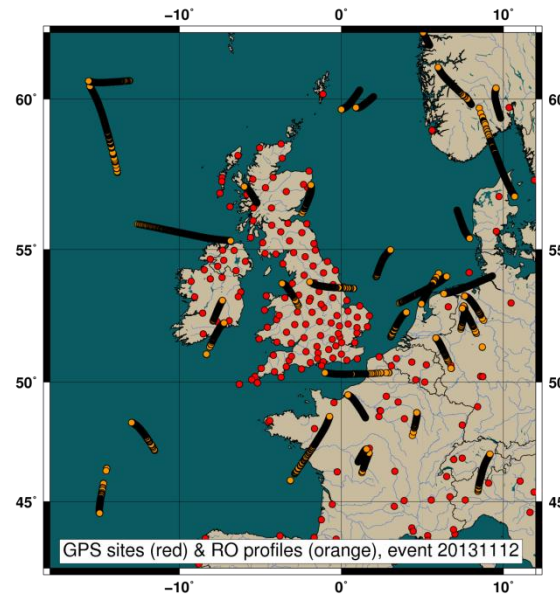
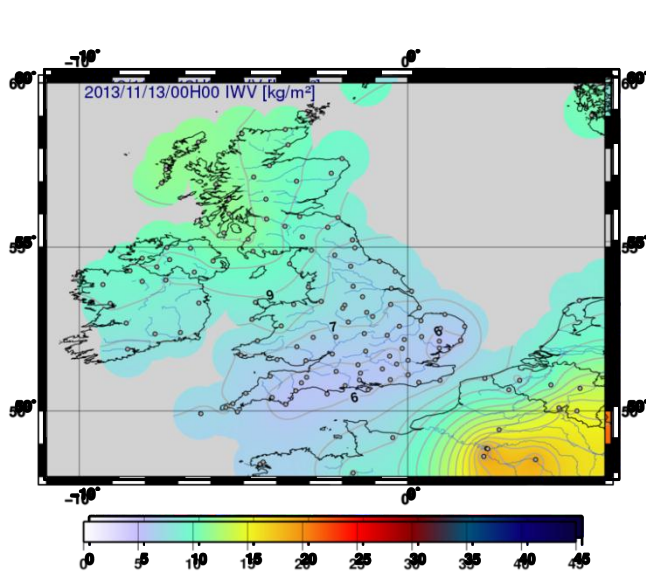


**development & assessment of  
real-time or sub-hourly  
tropospheric solutions  
(Sub-WG RT/UR)**

## Ground based GNSS sensors and Radio occultations synergy during convective events



## Integrated water vapor tomography during extreme events using GPS RO



## COST ES1206, ASI/CGS Contribution to WG3

- **WG3 co-chairing**
- **EPN+IGS core network reprocessing 1996-2013**
- **Standards & Methods ZTD2IWV conversion, tropo file format issue**

## COST ES1206, Fondazione Bordonni Contribution to WG3



Location of Sodankylä site.



### **Sodankylä (Finland)**

Coordinates: [67°4'N 026°6'E](#) at 179 m asl

- The site is representative of high latitude conditions in northern Europe (**ARCTIC zone**)
- **2000-2014 RAOB** profiles at 00 and 12UTC by the **Finnish Meteorological Institute's Arctic Research Centre (FMI-ARC)**
- The measurements are performed by Vaisala Radiosonde RS92-SGPs